

Contact:



WPQ AS  
www.weld.no

Leif Johnstad	leif@weld.no	+47905 74 941
Gisle Hansen	gisle@weld.no	+47909 31 902
Ove Grimsrud	ove@weld.no	+47908 44 667



WPS AS

Ove Grimsrud	ove@weld.no	+47908 44 667
Gisle Hansen	gisle@weld.no	+47909 31 902
Leif Johnstad	leif@weld.no	+47905 74 941



S. O. G AS

www.shanghai-offshore.com

Gisle Hansen	gisle@weld.no	+47909 31 902
Ove Grimsrud	ove@weld.no	+47908 44 667



Task Force Nantong

“We supply Chinese personal in accordance to Chinese law.”

Gisle Hansen	gisle@weld.no	+47909 31 902
Ove Grimsrud	ove@weld.no	+47908 44 667



“We will always stand on



quality side”



“We will always stand on quality side”

## Project Execution Plan Introduction

- Linked towards client Business Strategy.
- Adjusted to client needs and requirements.
- A brief description of the project as defined by the client.
- Objectives of the project as defined by the client, and implications to the site management. (If any)

## Project Execution Plan Management System

The site management system may include e.g.

- Intergration management / scope and issue management.
- Planning and progress management / cost management
- QHSE management / human resource management.
- Document management / communication management.
- Risk management /procurement management.

## Project Execution Plan

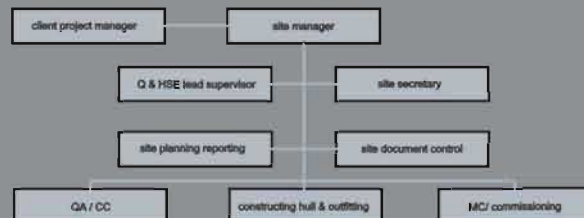
Health, safety, environment and quality

- In alignment with client HSE & Q requirements and in accordance with ISO std. (i.e ISO 9001, 14001, OHSAS18001)
- Site specific programs, plans and procedures.
- HSE and quality program/plan and procedures.
- Audit program / inspection and test plan.
- Handling of non conformances/deviations
- Job description (key personell), etc.

## Project Execution Plan

- Schedule
- Progress follow- up
- Reporting.

## Project Execution Plan Organization



## WPQ`s Vision



Fulfill client requirements and expectations with regard to quality, cost and on time delivery.

Assist clients by establishing and developing new business areas, new suppliers / contractors for the national and international on and offshore industry.

Develop partnership / alliances between Eu customers and suppliers in China, Singapore, Thailand, Vietnam and the Philippines.

Supply of integrated management in all project phases.



## Part of our Track Record

Hantong shipyard and heavy industry Nantong  
SEVAN 300 No 4 and No 5

Welding engineer / NDT operators  
QC inspectors / Comm. engineers  
Site engineers / Develop-training



Cosco Nantong shipyard  
Nantong SEVAN 650 DRILLER Nantong China

Site manager / Lead engineers  
QC, MC, HSE, Comm., LQ



Umoe Scat Harding  
Audit / review of potential manufactures for davit production. Qindao China.



Sevan 650 Riser project  
Lead QC supervisor  
NDT technicians  
Aker solution Malaysia

Island Offshore GM 4000  
QC inspectors / document controllers  
Secretary / weld engineer - China



Norsafe As pazflor 4630 project  
Chief NDT engineer in China

## Site Personell

- NDT technicians
- Welding engineers (IWE)
- QC inspectors: steel, paint, pipe, EIT, machinery, etc.
- Training resources
- HSE
- Site secretaries
- Document controllers
- Mc engineers
- LQ engineers
- Commissioning engineers
- Pipe engineers
- EIT engineers
- Construction managers
- Project managers, etc.

We are familiar with international standards such as ASME XX, Norsok XX, DNV OS XX etc.

