

PRESENTATION

- 1 General
- 2 TNF Walls
- 3 TNF Ceilings
- 4 TNF Floors
- 5 TNF Doors
- 6 TNF Wetunits
- 7 TNF Magic
- 8 TNF Prefab Cabins





The world's leading brand in marine interiors establishes production in China



INEXA Interiors (Nantong) Co., Ltd.

Inexa China Management



INEXA CHINA MILESTONES 2009

- Inexa Holding, Sweden, under the leadership of Chairman Karl-David Sundberg, acquires 100 % of Inexa China
- Full product range established and certified
- New ISO 9000 system and Total Quality System under training and control by DNV established
- Full implementation of Inexa JIT-5S system
- Organisation consolidated



Inexa Holding's Chairman, Karl-David Sundberg now controls 100 % of Inexa China

INEXA TNF DENMARK MANAGEMENT



Employees

Product Range

- TNF Wall Panels
- TNF Ceilings
- TNF Marine Doors
- TNF Inspection Hatches
- TNF JIT-Cabins
- TNF Wet Units
- TNF Magic Wall Finishes

FACTORY







DET NORSKE VERITAS MANAGEMENT SYSTEM CERTIFICATE

Certificate No. 50499-2009-AQ-RGC-RvA

This is to certify that

INEXA Interiors (Nantong) Co., Ltd.

No. 66 Jinxing Road, Economic & Technological Development Zone, Nantong City, Jiangsu Province 226017, P.R. China

has been found to conform to the Management System Standard:

ISO 9001:2000

This Certificate is valid for the following product or service ranges:

**Design, Development, Manufacture and Service of Wet Unit For Marine.
Manufacture and Service of Interior Accommodation System
for Marine (the Panel, Ceiling, Floating Floor and Fire Door).**

Initial Certification date:

April 10th, 2009

Place and date:

Shanghai, April 22nd, 2009

This Certificate is valid until:

April 10th, 2012

for the Accredited Unit:
DNV CERTIFICATION B.V.,
THE NETHERLANDS



The audit has been performed under the supervision of

Zhang Guang Yu
Lead Auditor

Chen Yi
Management Representative

Lack of fulfilment of conditions as set out in the Certification Agreement may render this Certificate invalid.



Certificate No.: MED-D-1201
Item No.: A.1/3.11
Job Id.: 344.1-001491-2


APPENDIX, REV. NO. 0

QS - Certificate of Assessment – EC, Certificate no. MED-D-1201

Type designation	EC Type-Examination Certificate No.	Expiry date	QS Assess. Report dated	USCG approval number
Marine C65 type B-15 Class ceiling and A class deck core compound structure	MED-B-5160	2014-06-18	2009-07-01	164.110/EC0575/5160
Marine 2SM type B-15 Class Bulkhead	MED-B-5161	2014-06-18	2009-07-01	164.108/EC0575/5161
Marine 2SL type A-60 Class Bulkhead light structure	MED-B-5162	2014-06-18	2009-07-01	164.107/EC0575/5162
TNF Ceiling Type C55	MED-B-5259	2014-06-18	2009-07-01	164.110/EC0575/5259
Floating Floor Type FS7	MED-B-5260	2010-05-12	2009-07-01	164.105/EC0575/5260
Ceiling Type System C46	MED-B-5261	2014-06-18	2009-07-01	164.110/EC0575/5261
TNF Ceiling Type C65	MED-B-5262	2014-06-18	2009-07-01	164.110/EC0575/5262
TNF Ceiling Type C80	MED-B-5265	2014-06-18	2009-07-01	164.110/EC0575/5265
TNF B-15 Class Bulkhead Type 5SA	MED-B-5266	2012-12-21	2009-07-01	164.108/EC0575/5266
TNF B-0 Class Lining Panel Type 5SF	MED-B-5267	2012-12-21	2009-07-01	164.108/EC0575/5267
TNF Ceiling Type C64	MED-B-5268	2012-12-21	2009-07-01	164.110/EC0575/5268
TNF B-15 Class Ceiling Type C55-I	MED-B-5269	2013-02-07	2009-07-01	164.110/EC0575/5269
TNF B-0 Class Bulkhead Type 2SF-H-I	MED-B-5270	2013-02-07	2009-07-01	164.108/EC0575/5270
TNF B-15 Class Lining Panel Type 2SF-S	MED-B-5271	2013-02-07	2009-07-01	164.108/EC0575/5271
TNF Ceiling Type C25	MED-B-5272	2011-05-19	2009-07-01	164.110/EC0575/5272
TNF Ceiling Type C64	MED-B-5273	2011-05-19	2009-07-01	164.110/EC0575/5273
TNF Bulkhead Type 2SL	MED-B-5274	2012-05-14	2009-07-01	164.108/EC0575/5274
TNF B-15 Class Bulkhead Type 2SF	MED-B-5275	2012-08-22	2009-07-01	164.108/EC0575/5275
TNF B-0 Class Bulkhead Type 2SF	MED-B-5276	2012-08-22	2009-07-01	164.108/EC0575/5276
TNF B-15 Class Bulkhead Type 2SA	MED-B-5277	2012-08-22	2009-07-01	164.108/EC0575/5277
TNF 2S Type F, Q, M and A	MED-B-5279	2012-10-05	2009-07-01	164.108/EC0575/5279
Marine 2SF-S-I Type B-15 Class Lining Panel	MED-B-5281	2013-07-29	2009-07-01	164.108/EC0575/5281

Manufactured at premises of INEXA Interiors Nantong Co., Ltd., Nantong China.

The manufacturer complies with the Council Directive 96/98/EC on Marine Equipment and is allowed to affix the Mark of Conformity followed by the DNV identification number 0575 and the two last digits of the number of the year in which the product is produced.

Example:  0575/09

The manufacturer shall issue a Declaration of Conformity for each product with reference to the EC Type-Examination Certificate and this QS – Certificate of Assessment – EC.

TNF-Inexa

Quality Management System

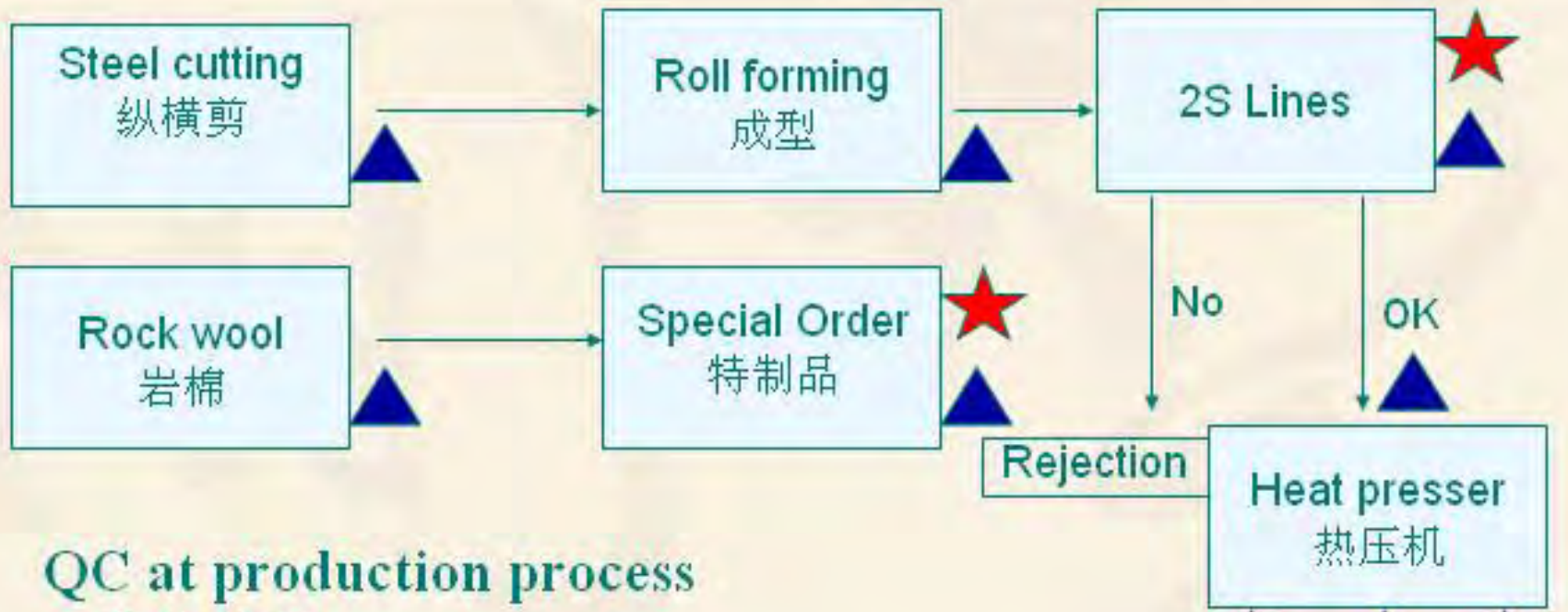
伊纳克赛质量管理体系

is

Total quality management

全方位的质量管理体系





QC at production process 质控过程



 Company QC 质检
 Functional QC 自检

Proof of improved health and
safety...

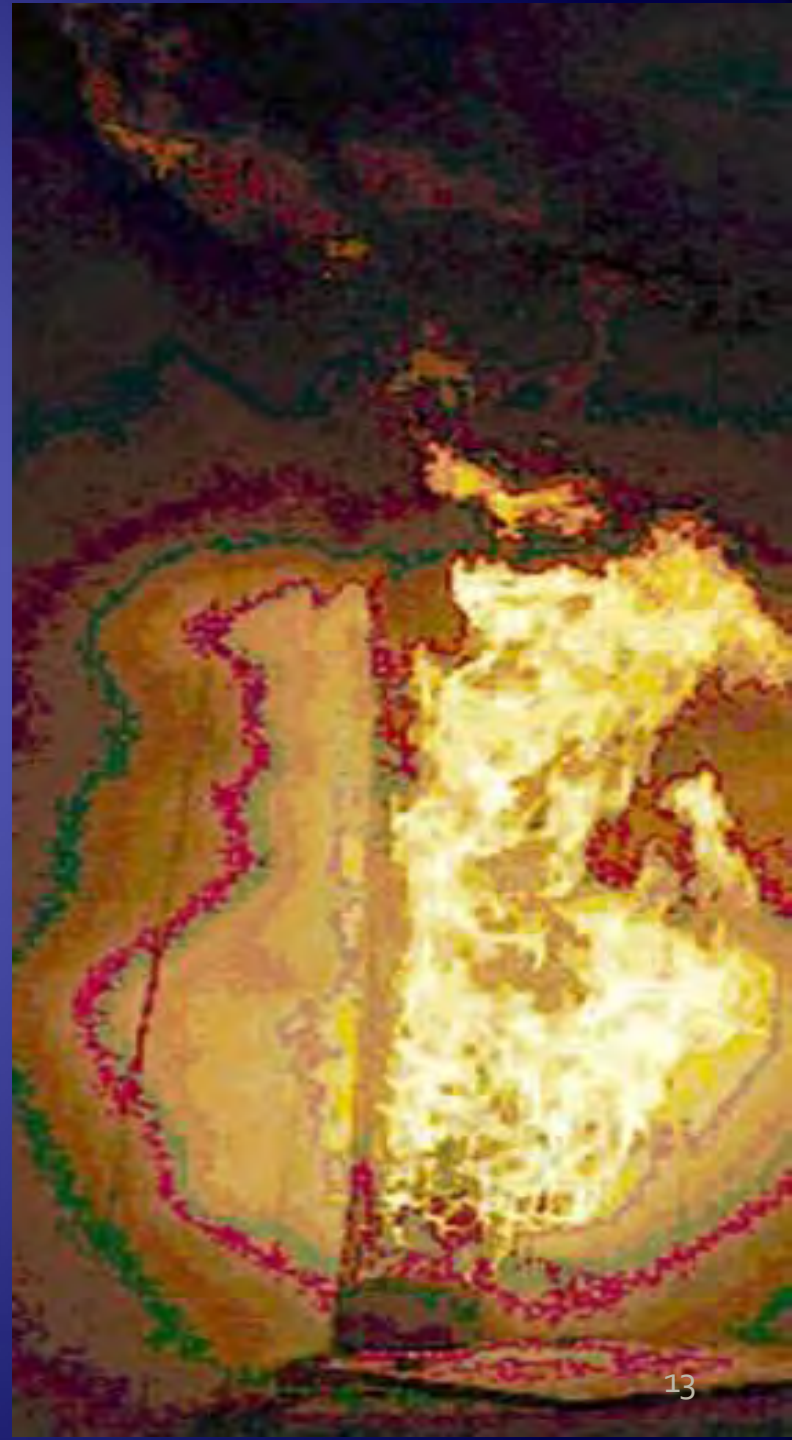
The Fire Test

INEXA CHINA

Far East Fire Testing Centre, Shanghai

INEXA TNF

Danish Institute of Fire and Security
Technology (DBI)



TNF overall Work with noise reduction

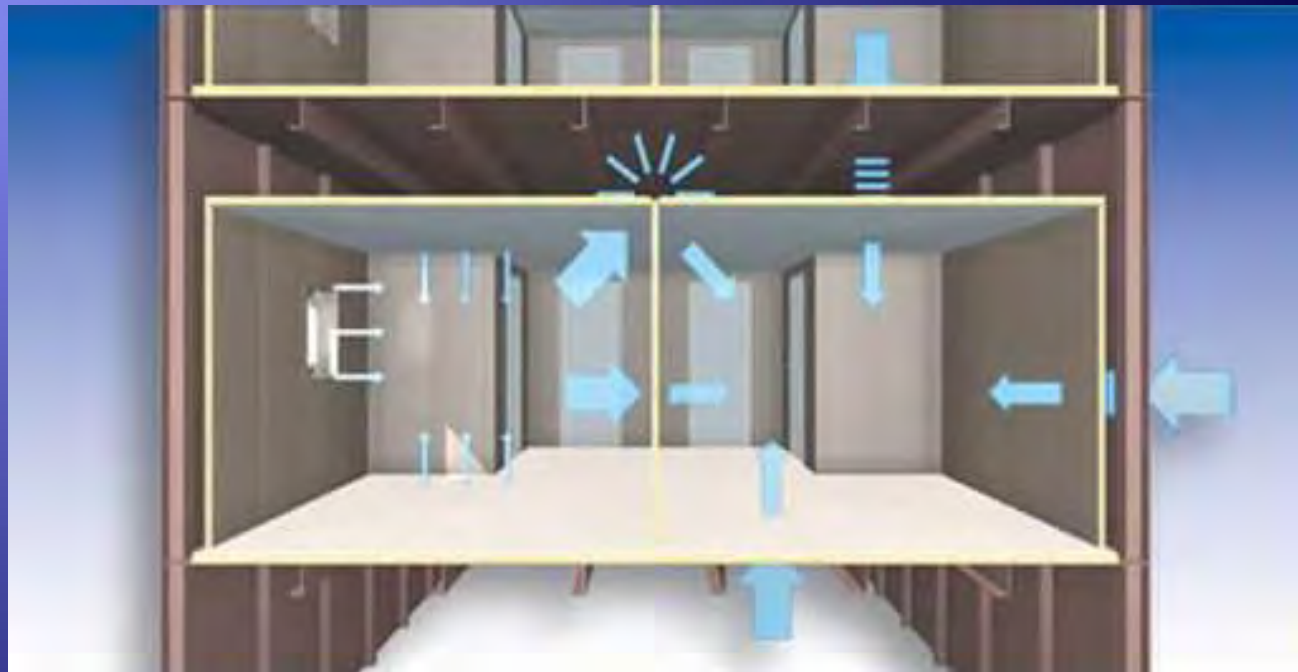
- Redcution technology
- Reduction effect

INEXA CHINA

Institute of Acoustics,
Tongji University

INEXA TNF

Lloyds Register
Odegaard &
Danneskiold-Samsøe
A/S



TNF was the FIRST with...

- TNF Modular Wall Systems
- 44 dB noise reduction panels
- Advanced CAD interior architectural systems
- ISO 9001 quality approval
- Halogen free, non toxic surfaces TNF Pacific and TNF Magic
- TNF JIT KIT Systems
- TNF JIT Cabins



TNF

– the most innovative supplier of interior accommodation

Products

- ◆ Inventor of the brandname TNF
- ◆ Inventor of the modular system
- ◆ Inventor of the patented TNF MAGIC

Experience

- ◆ 35 years' global experience
- ◆ We surpass international standards
- ◆ Comprehensive JIT-philosophy

Company

- ◆ A global supplier of interior accommodation world wide
- ◆ Production capacity 1.500,000 m²/year

Delivered to

- ◆ more than 8,000 commercial ships
- ◆ more than 70 cruise ships
- ◆ more than 500 offshore platforms
- ◆ more than 400 navy ships

Excellent Service

Responding to your needs



CRUISERS



OFFSHORE



Product Range

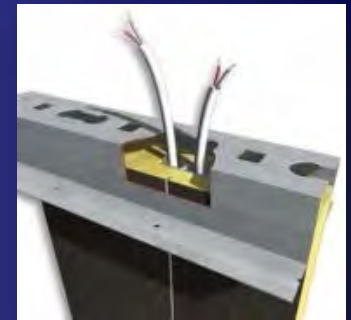
- TNF Wall Panels
- TNF Ceilings
- TNF Marine Doors
- TNF Inspection Hatches
- TNF JIT-Cabins
- TNF Wet Units
- TNF Magic Wall Finishes

TNF 2S

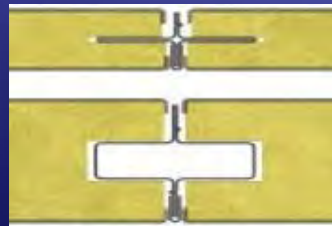
The most versatile panel system in the market



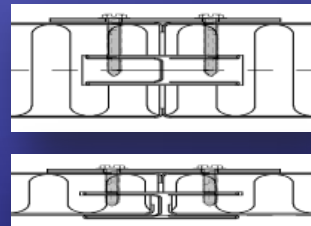
H-profile and punched top profile



TNF Removable Panels

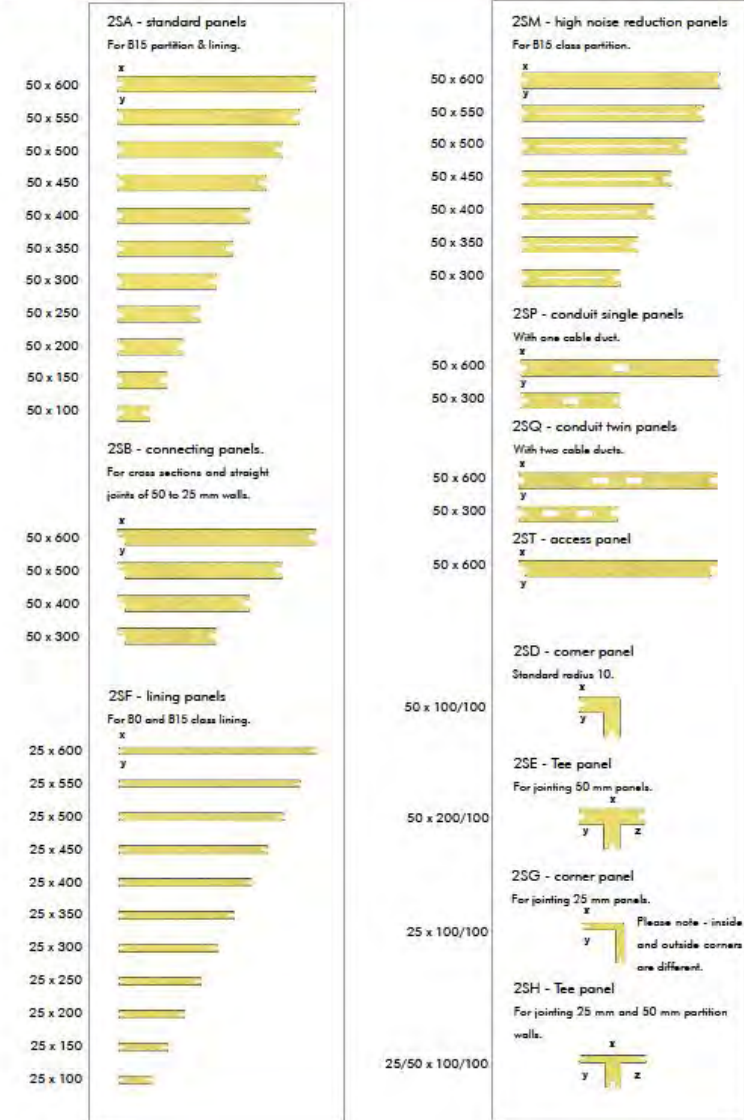


H-profile as reinforcement



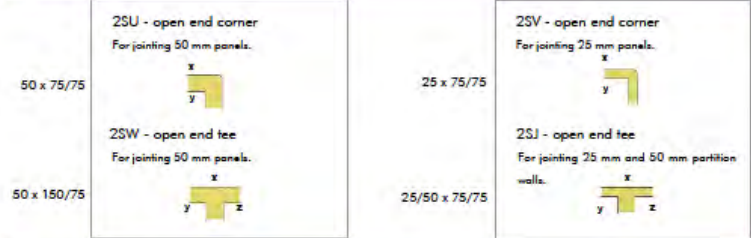
TNF Panels

System 2S Steel panels - Modular range

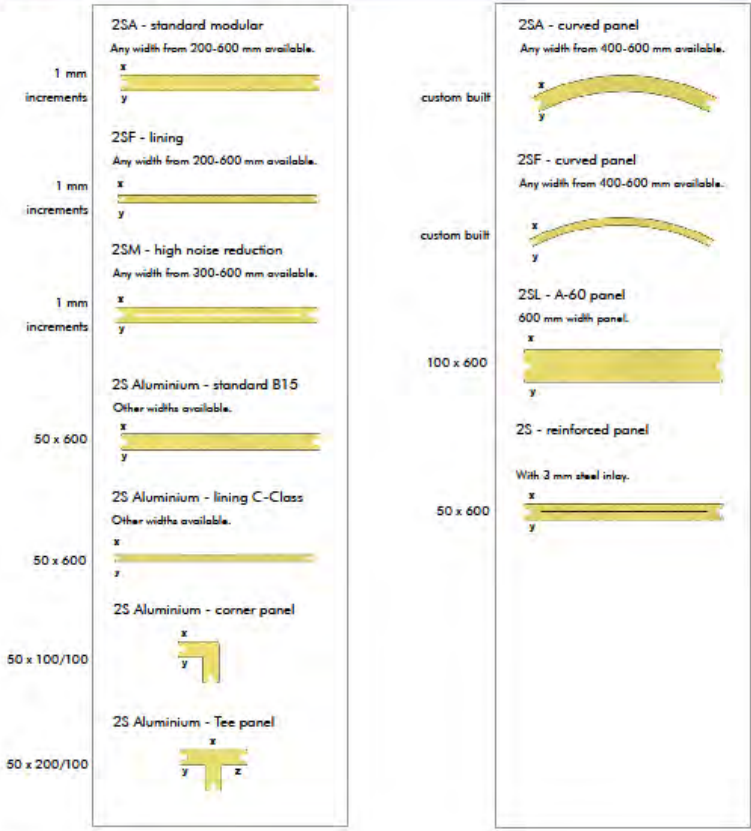


TNF Lining & Partition panel plan

System 2S Steel panels

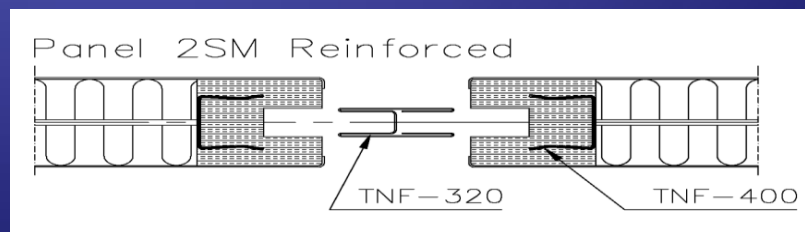
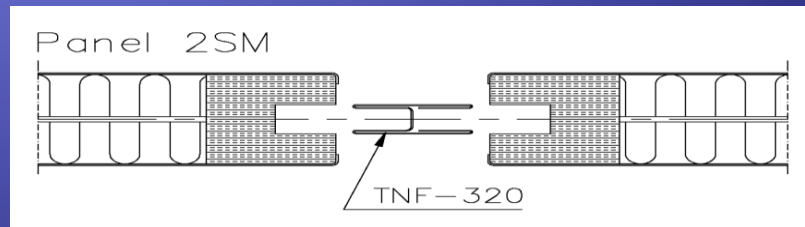
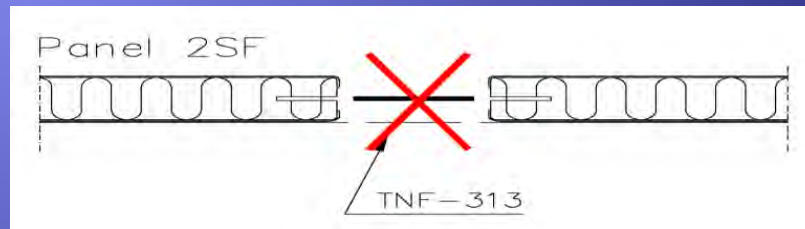
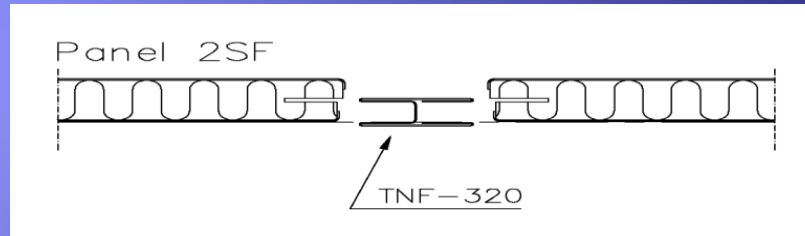
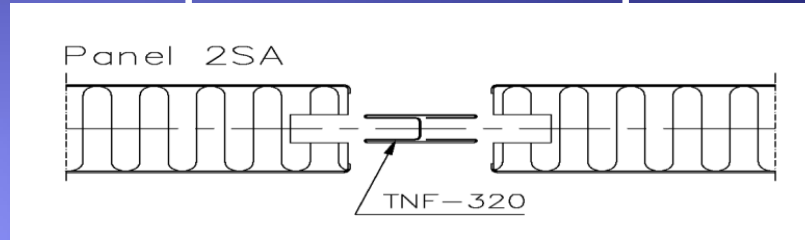


System 2S Steel panels - Tailor-made

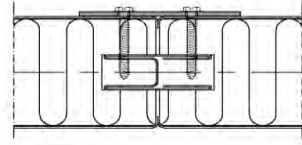


TNF Lining & Partition panel plan

Multiple use of H-profile

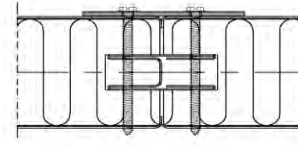


TNF 320 as reinforcement

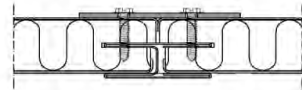


Bulkhead

2SA

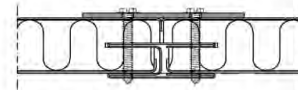


Lining

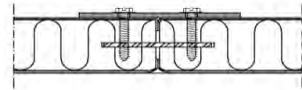


Lining

2SF



Lining

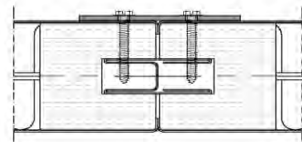


Bulkhead

2SF

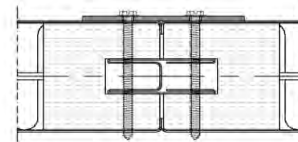


Lining

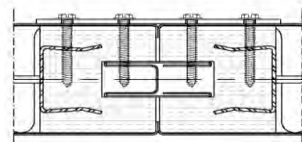


Bulkhead

2SM

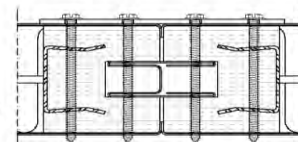


Lining



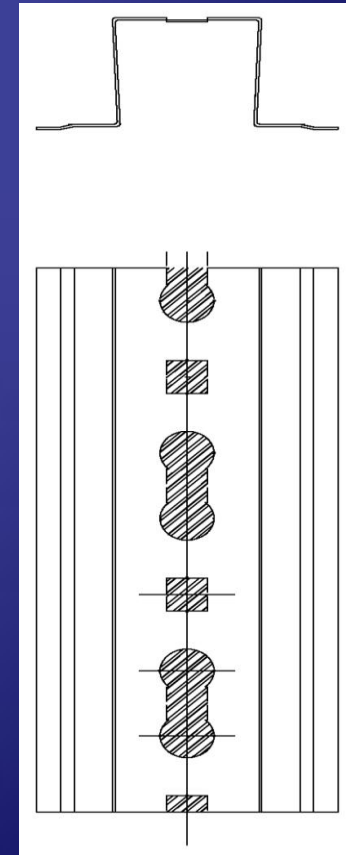
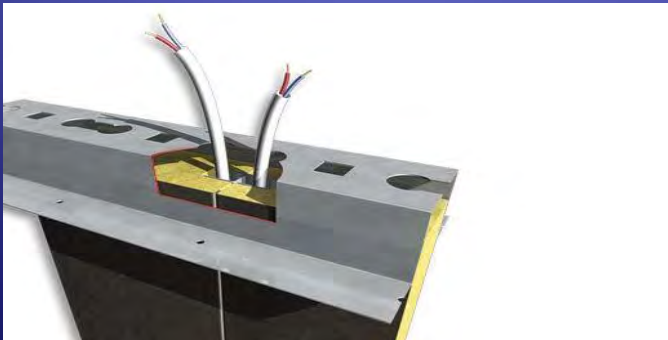
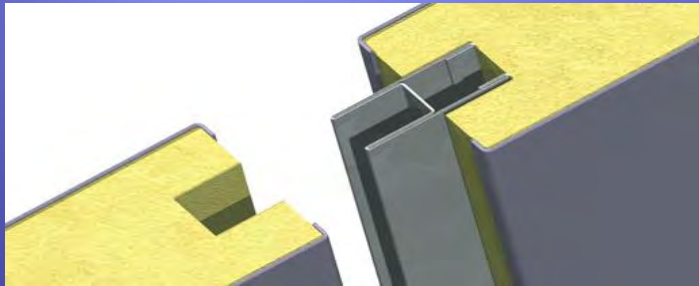
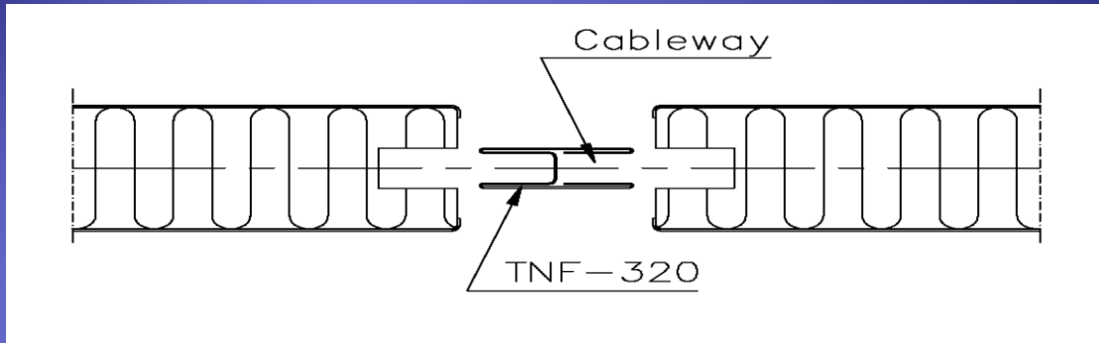
Bulkhead

2SM
Reinforced



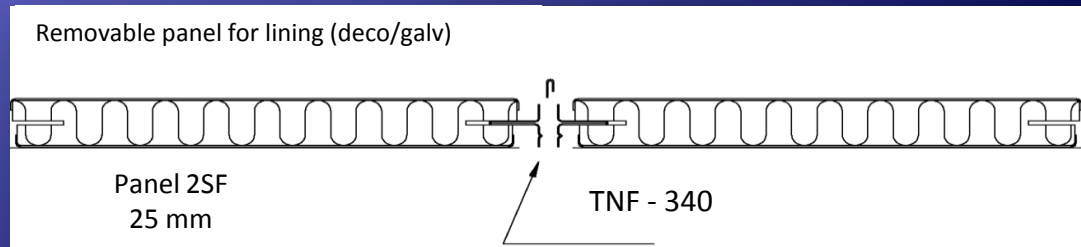
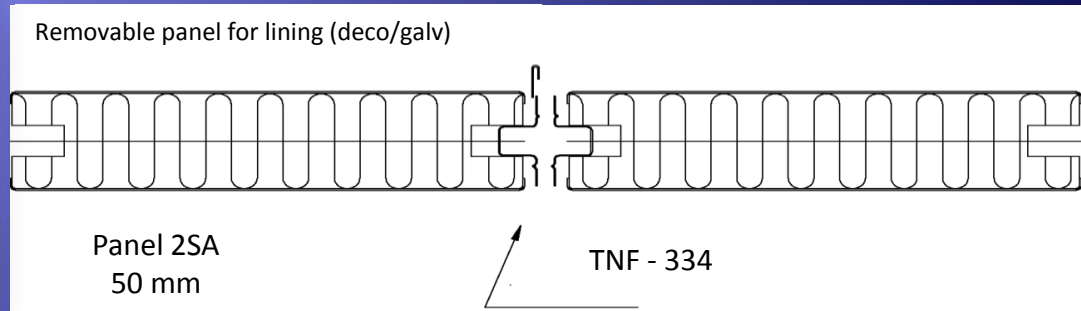
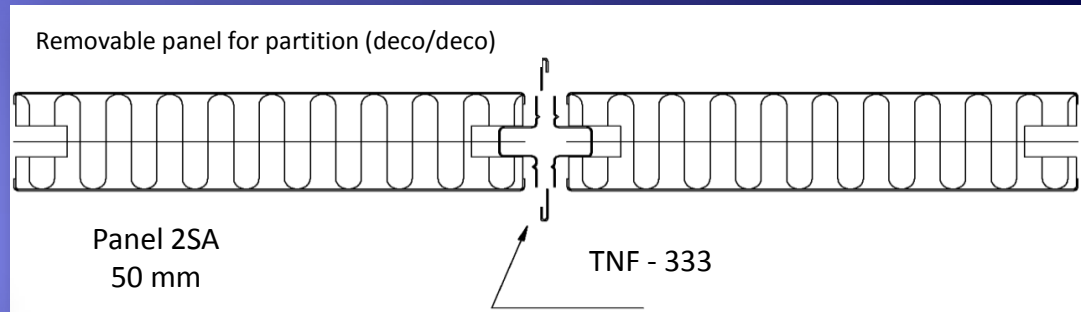
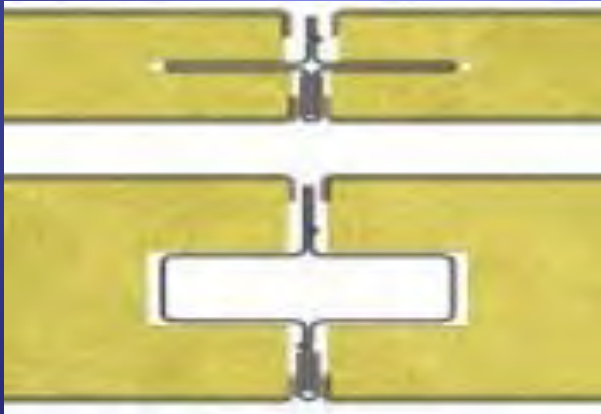
Lining

H-profile and punched top profile

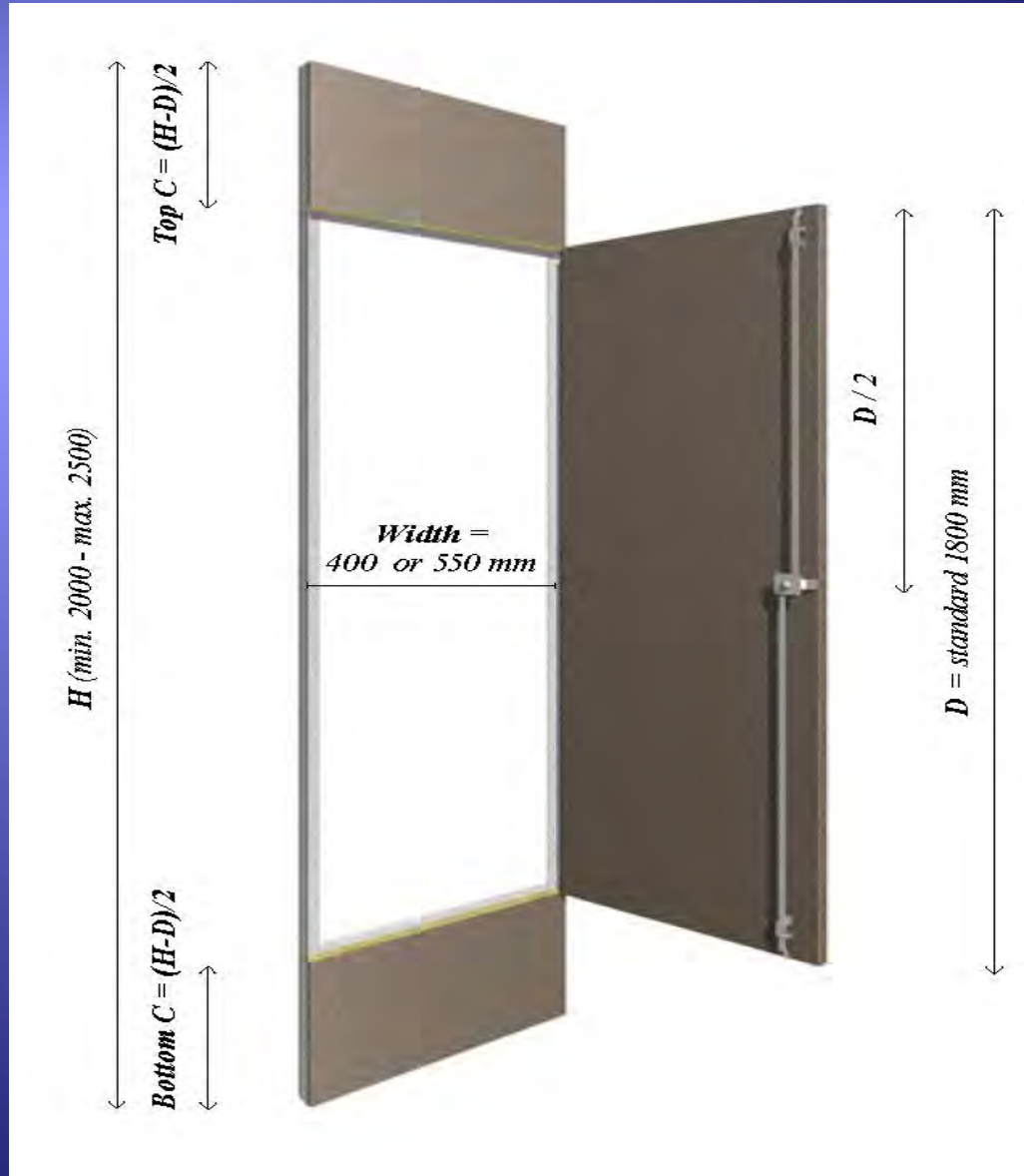




TNF Removable Panels

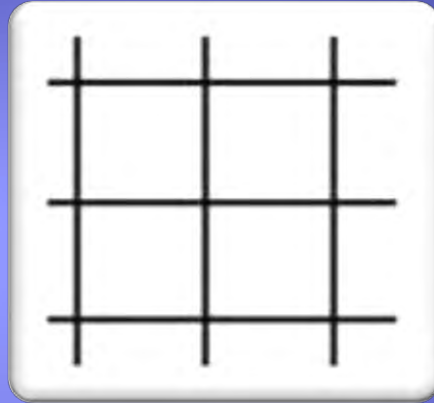


TNF Inspection door



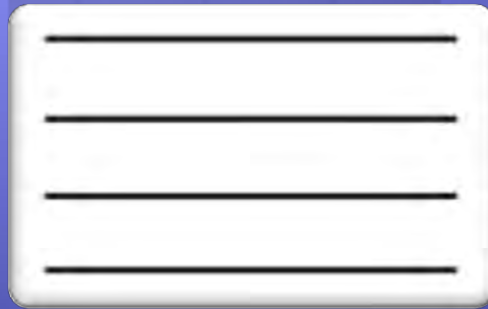
TNF range of ceilings

C46



B15 square tiles
600 x 600 mm

C55



B15 self-supporting
Ceiling 300 mm wide

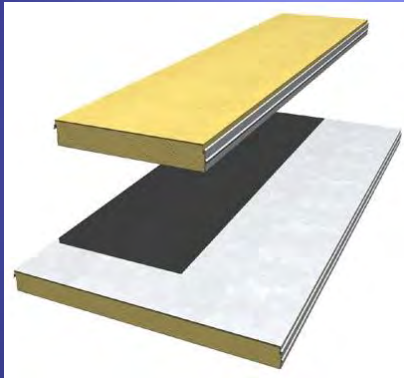
C65



B15 sandwich
Carry up to 25 kg/m²
600 mm wide panels

TNF Ceilings for all situations

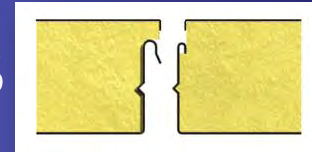
Self supporting



C55

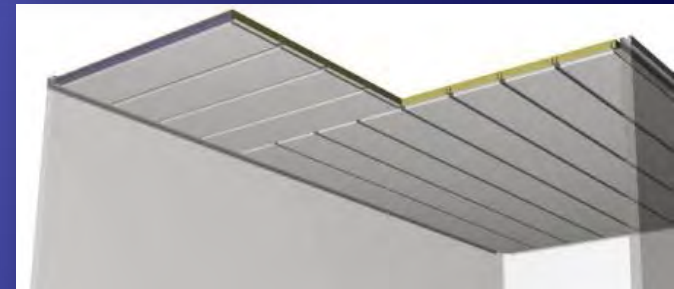
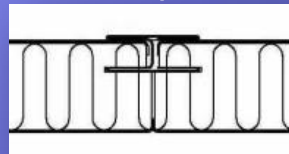


C65



C80

C25/64



Suspension system C46

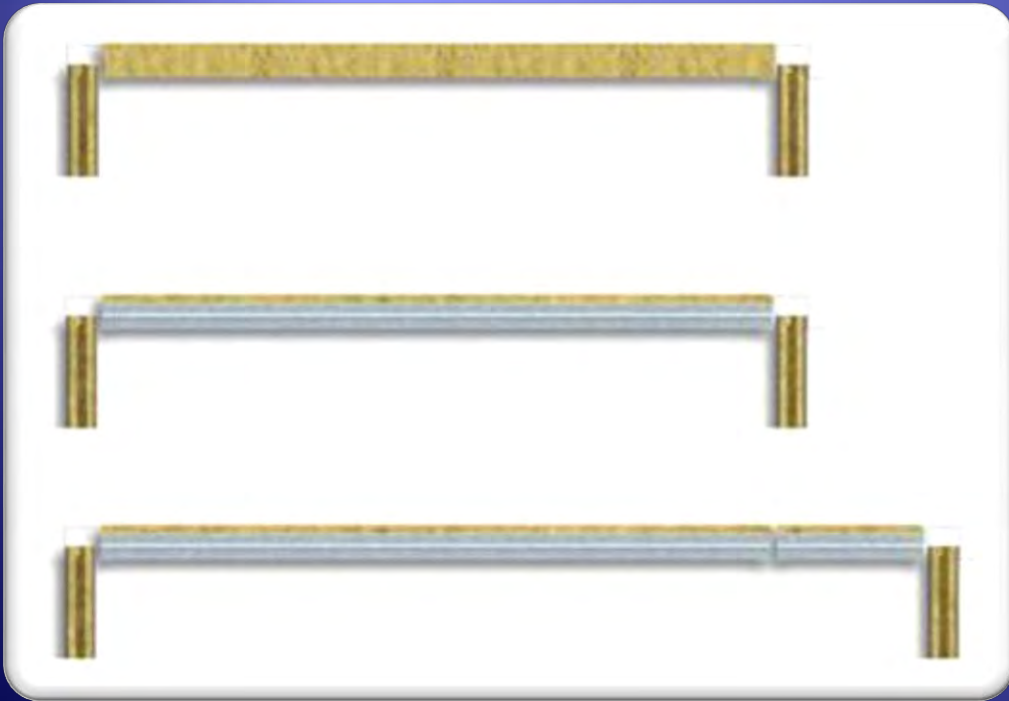


Hatches

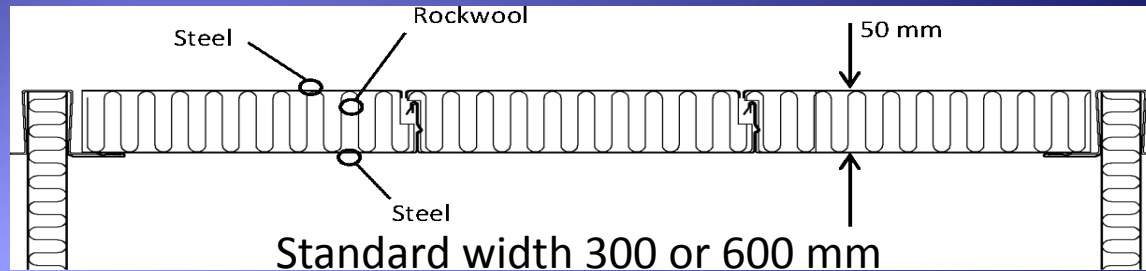


TNF C55

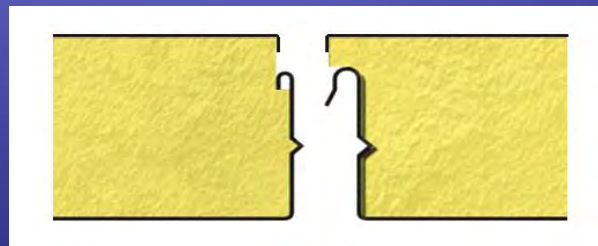
Selfsupporting ceiling



TNF C65 Ceiling



- Self supporting up to 3 m
- 25 kg load without suspension



Inter – locking
joint

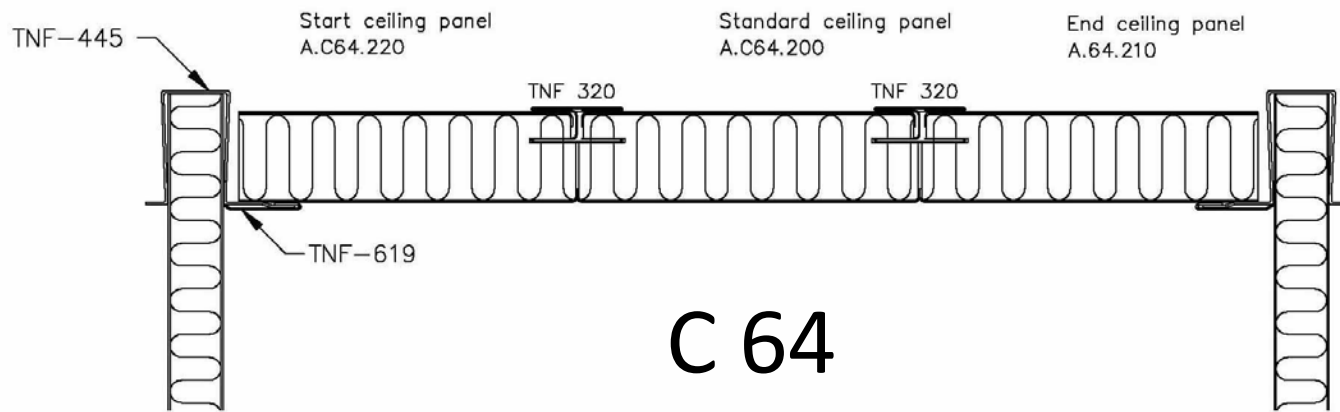
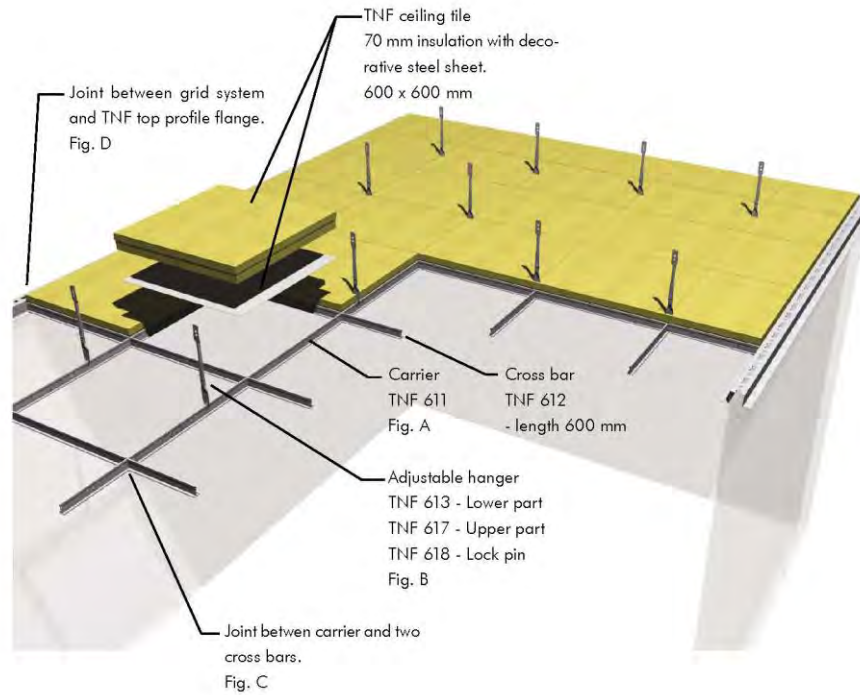
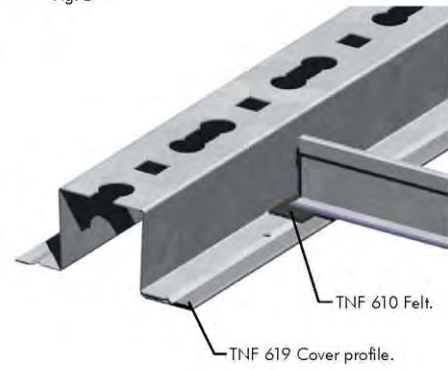


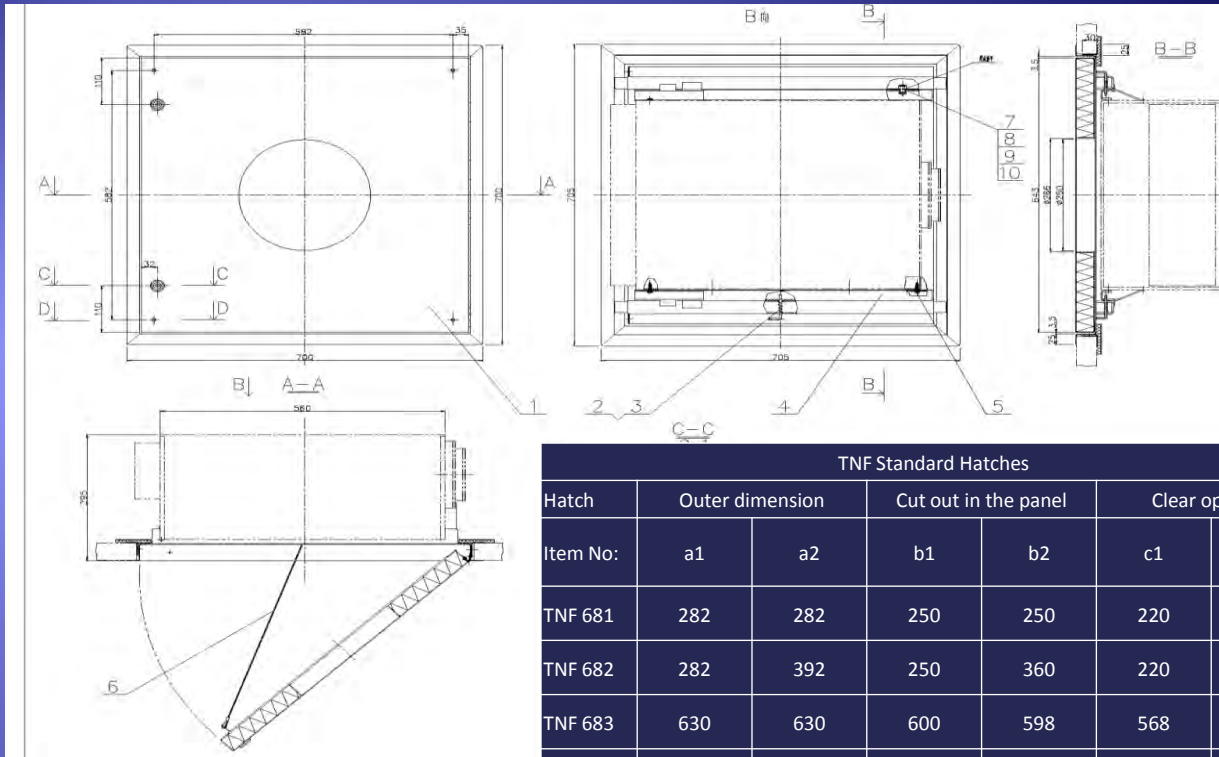
Fig. C



Fig. D



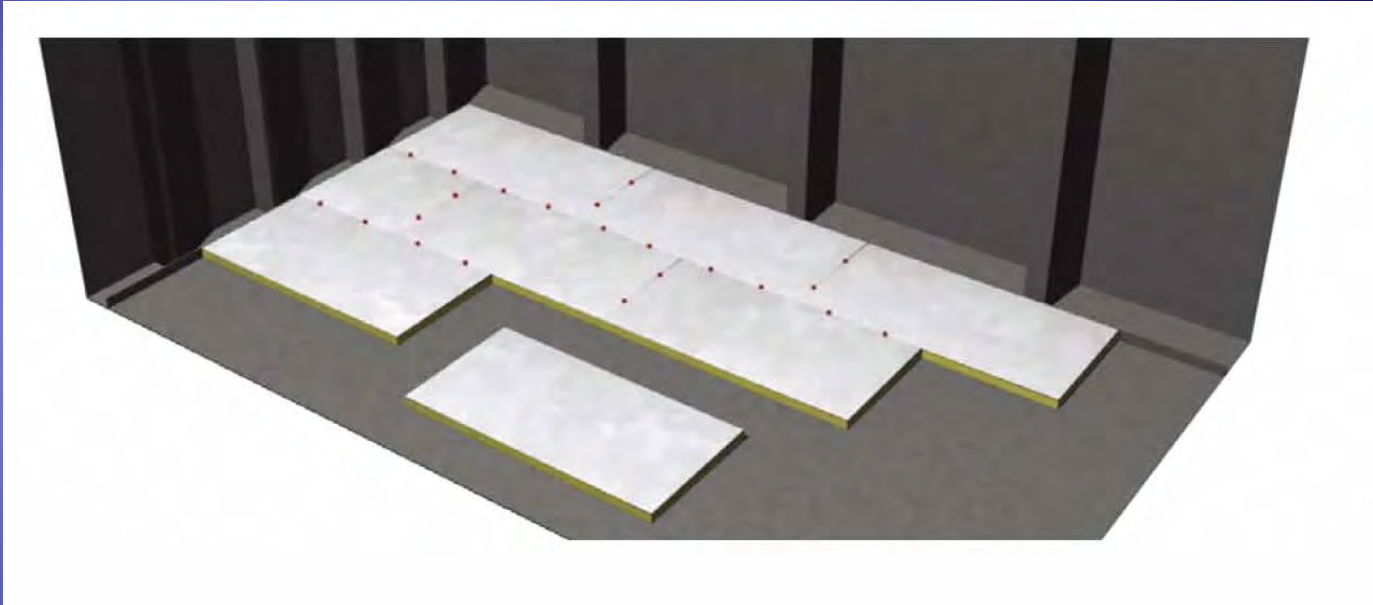
TNF Hatches



TNF Standard Hatches						
Hatch Item No:	Outer dimension		Cut out in the panel		Clear opening	
	a1	a2	b1	b2	c1	c2
TNF 681	282	282	250	250	220	220
TNF 682	282	392	250	360	220	330
TNF 683	630	630	600	598	568	568
TNF 684	512	512	480	480	450	450



TNF FLOATING FLOORS



Product specifications		
Product names	TNF unit FS7	TNF unit FS5
Dimensions:		
-thickness	70 mm	50 mm
-length x width	600 mm x 1200 mm (approx. 2x4 ft.)	600 mm x 1200 mm (approx. 2x4 ft.)
-weight	5,74 lb./ sq.ft.	5,12 lb./ sq.ft.
Thermal Transmittance	0,60 W/m ² °C (0,10 BTU/sq.ft. °F)	0,80 W/m ² °C (0,14 BTU/sq.ft. °F)
Noice Reduction incl. Steel dec	R(w)=53dB (S.T.C. = 53 dB)	R(w)=48dB (S.T.C. = 53 dB)
Fire class	A60	C-Class

TNF Doors



B15 single hinged door



B15 double hinged door



A15 single hinged door



A60 single hinged door

B15 hinged doors, basic construction

- single hinged doorleaf made of steel plate with mineral workcore
- double hinged doorleaf made of steel plate with mineral workcore
- double doors with two-point latch on inactive doorleaf
- aluminium or steel transit fastened with st.st. rivets
- frame made of steel profile
- top plate or top part as frame profile
- counter frame for wall installation
- st.st. hinges, screwed to frame and doorleaf
- st.st. sill and striker plate
- reinforcement for doorcloser and magnet
- cut out for lock

Sill types



U-profile Z-profile L-profile



Z-frame I-frame L-frame



B15 single hinged door



B15 double hinged door

A15 hinged doors, basic construction

- doorleaf made of steel plate with mineral wool core
- steel transit fastened with st.st. rivets
- frame made of steel profile
- st.st. hinges, sill plate and striker plate
- reinforcement for doorcloser and magnet
- cut out for lock



A15 single hinged door



A60 single hinged door

A60 hinged doors, basic construction

- doorleaf made of steel plate with mineral wool core
- double doors with two-point latch on inactive doorleaf with recessed st. st. handle
- steel transit fastened with st.st. rivets
- frame made of steel profile
- 3-point hinges with ball bearing and grease nipples
- reinforcement for doorcloser and magnet
- cut out for lock
- double door with 3-point cylinder lock inactive doorleaf

Different sill types to fit all types of boltless solutions:



U-profile Z-profile L-profile

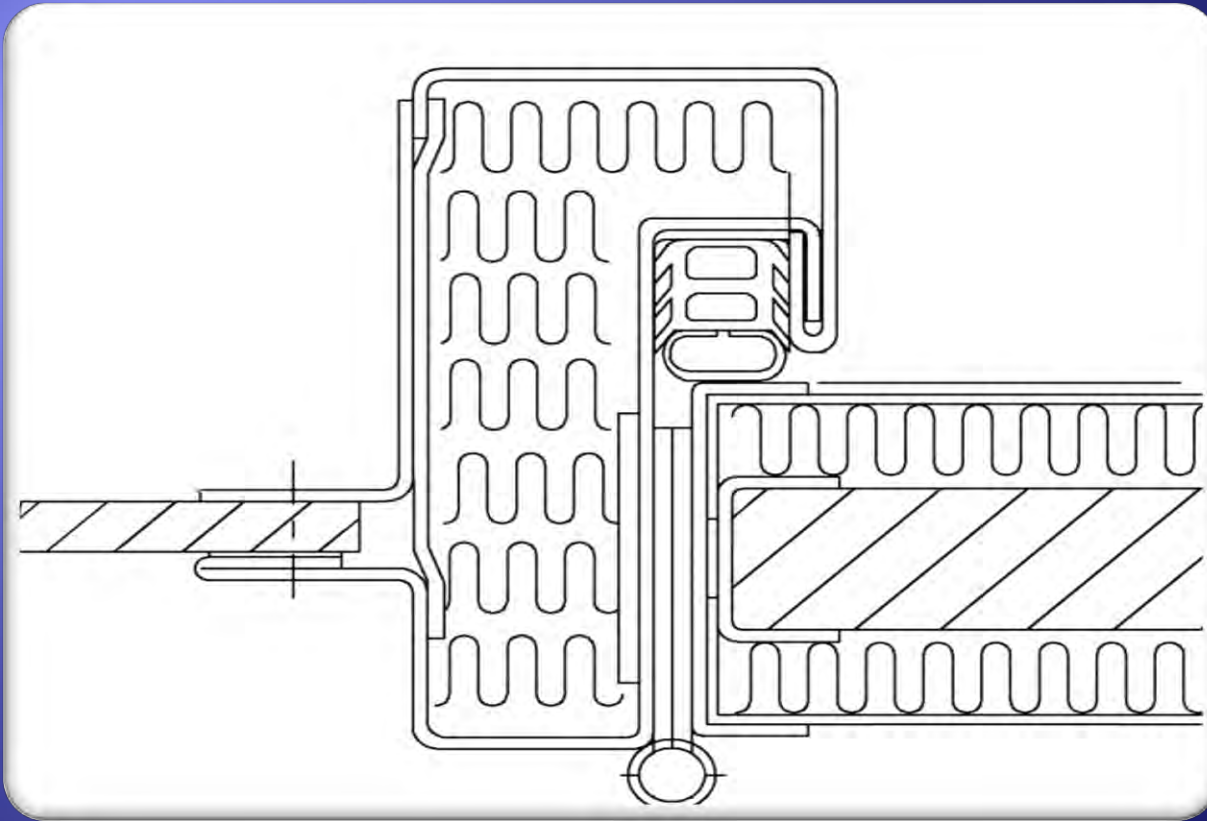
Doorleaf Surfaces

- powder painting (A15) or wet painting (A60), standard RAL colour
- PVC, standard label
- TNF Magic
- stainless steel, AISI 304 or 316

Accessories

- The doors can be equipped with:
- lockcase, handle, escutcheon and cylinder
 - ventilation grills (ISO-500um?)
 - kick out panel
 - door closer
 - door magnet/hold
 - kick plate in st.st.

A-door Box Frame



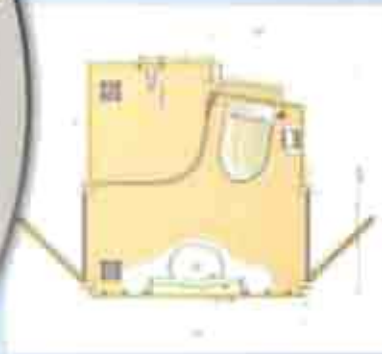
TNF WET UNITS





TNF Prefabricated Wet Units

TNF STANDARD TYPES



Type 1



Type 2



Type 3

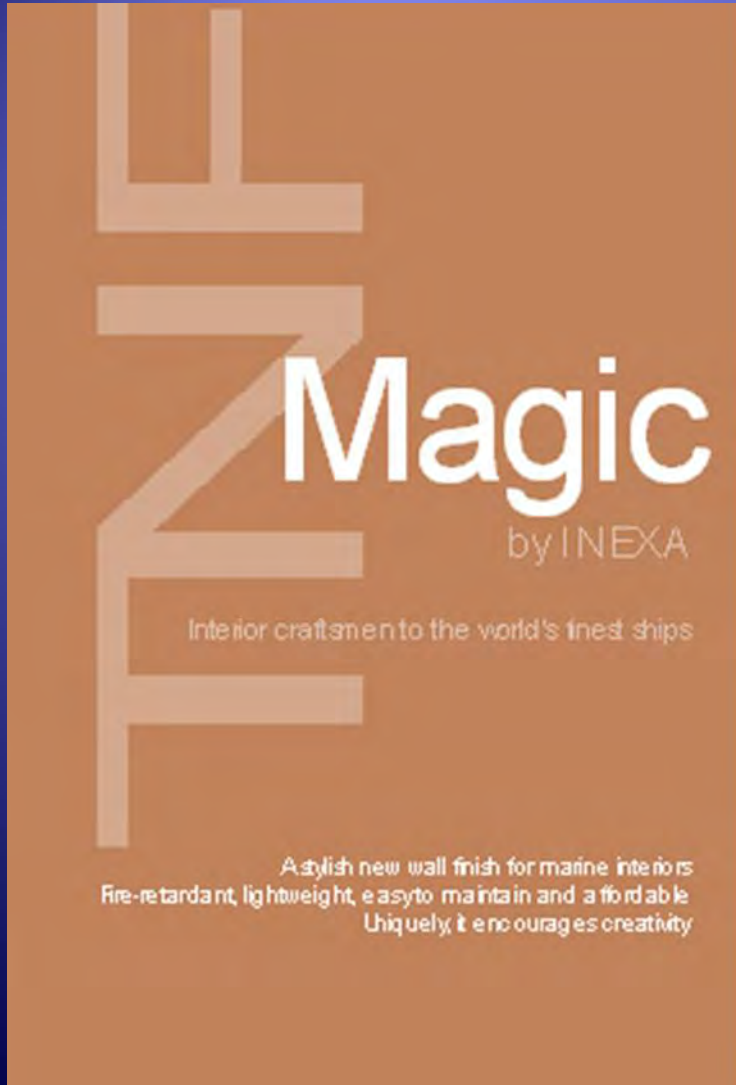


Type 4



TNF Magic

A new wall finish



- Halogen free
- Fire Retardant
- Low flame spread surface
- Low calorific value
- Non toxic
- No Chlorides
- No Cyanides
- No Dioxin
- Lightweight
- Hard Wearing
- Easily Maintained
- Competitive
- Vast Colour Range
- Stylish

Durable surface

- Superior fire safety
- Galvanized steel with ARS-surface
- No foil, but impressed directly into the ARS-surface
- Surface thickness: 0,033 mm
- Chemical resistant

TNF Magic can be repaired

- Scratches can be repaired with paint and brush
- Shoepolish, rubber, oil and other materials can easily be removed with hot water and a cloth

Used in hundreds of ships and offshore units
since 1997



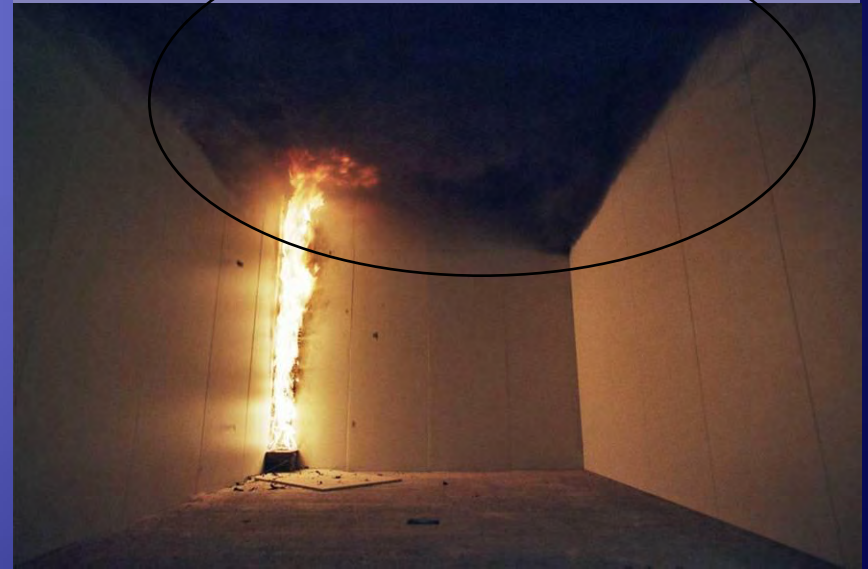
TNF Magic



100 kW ~ Burning Chair

2 Min.

PVC



100 kW ~ Burning Chair

Result of simultaneous fire tests at the European Fire & Conductivity Laboratory in Denmark and the Laboratorio Studi e Ricerche Sul Fuoco in Italy.



TNF Magic



300 kW ~ Burning Bed

4 Min.

PVC



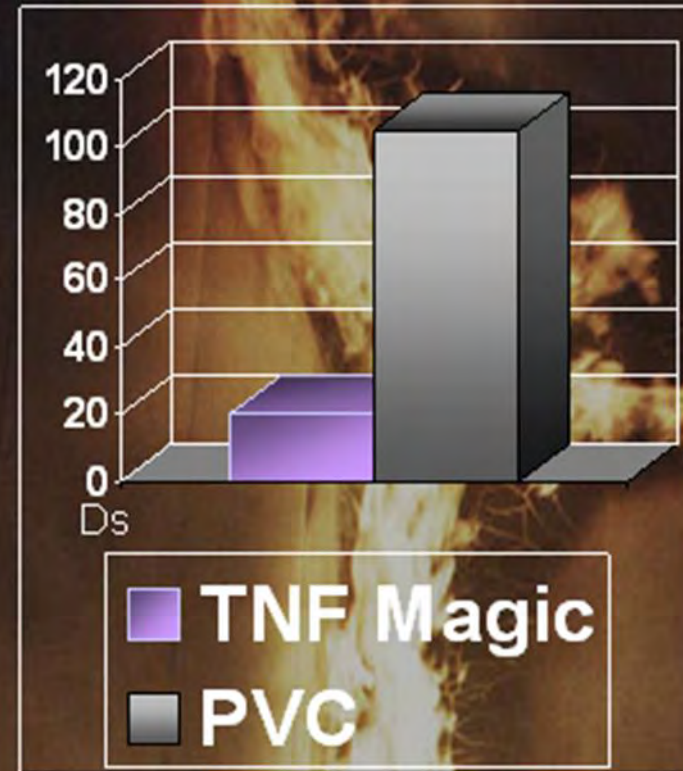
300 kW ~ Burning Bed

Result of simultaneous fire tests at the European Fire & Conductivity Laboratory in Denmark and the Laboratorio Studi e Ricerche Sul Fuoco in Italy.

Smoke Density Test

- Smoke density was dangerously higher in the PVC than in TNF Magic
- High density of smoke would seriously impede rescue and fire fighting crews
- Calorific value
TNF MAGIC: 0,6-0,9 MJ/m²
PVC.foil: 5 MJ/m²

**DANGER
LEVEL IN PVC**

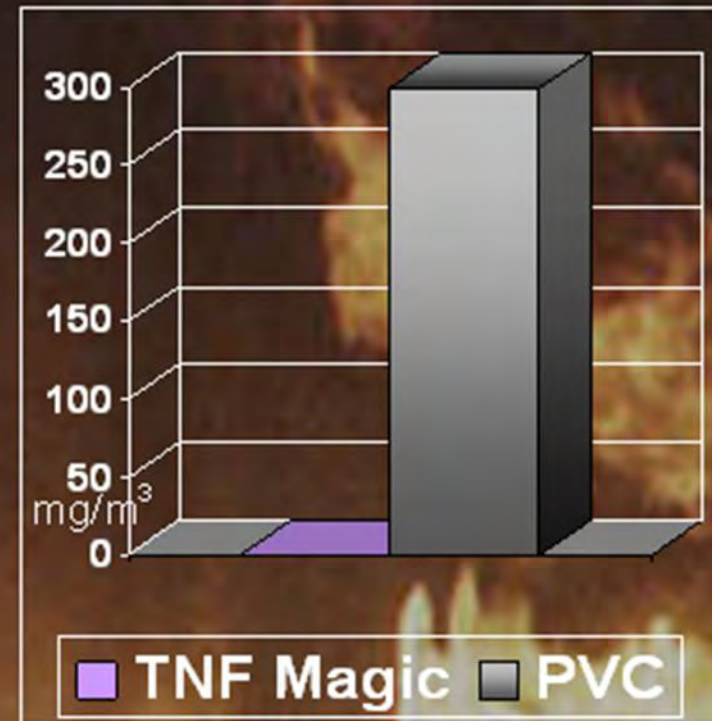


Result of simultaneous fire tests at the European Fire & Conductivity Laboratory in Denmark and the Laboratorio Studi e Ricerche Sul Fuoco in Italy.

HCl (Hydrogen Chloride)

- Levels of toxicity in the PVC would cause impaired breathing leading to water in the lungs
- Sensitive equipment failure
- No HCl detected in TNF Magic

**DANGER
LEVEL IN PVC**



Result of simultaneous fire tests at the European Fire & Conductivity Laboratory in Denmark and the Laboratorio Studi e Ricerche Sul Fuoco in Italy.

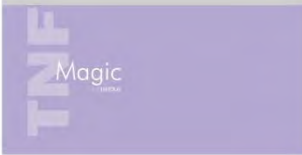
TNF MAGIC ...if you want to be original...

The Classic Collection 1

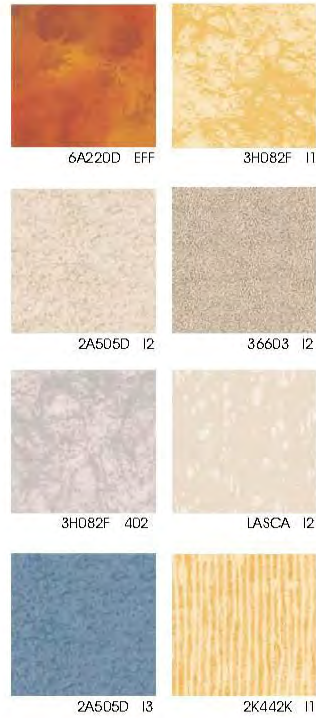


Sample Patterns

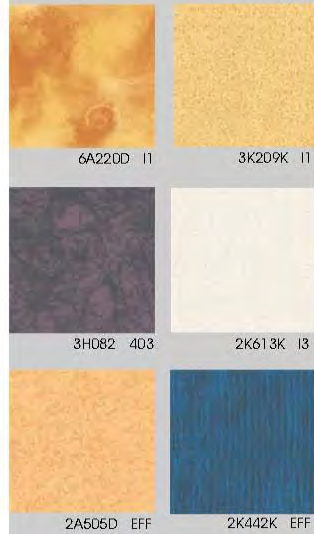
This is a small selection from the extensive number of patterns available. These have been reduced in scale to illustrate style. Colours are approximate and can be produced to suit personal preference. Full scale samples are available.



The Designer Collection

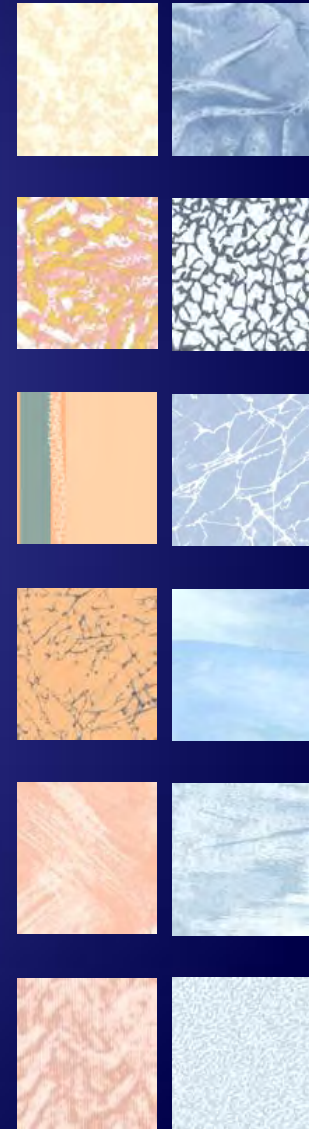


Concept Patterns 2





Sample Patterns

This is a small selection from the extensive number of 'Idea samples'. These have been reduced in scale to illustrate style. Colours are approximate and can be produced to suit personal preference. Full scale samples can be created to order.





TNF Magic wins Ship Safety Award



**THE 2004 RINA ~ LLOYD'S REGISTER
SHIP SAFETY AWARDS**

organised by
THE ROYAL INSTITUTION OF NAVAL ARCHITECTS

and sponsored by
LLOYD'S REGISTER

Winner of the Industry Category

INEXA A/S, DENMARK

For their entry

TNF Magic- A New Fire-Retardant Wall Finish

Manufactured by

TNF INTERIORS



The prestigious Ship Safety Award was presented by Mr Richard Moorhouse, Executive Chairman of Lloyd's Register (right) to Karl-David Sundberg, Chairman of Inexa TNF (center). Also present was the President of RINA, Mr Nigel Gee (left). The ceremony was held at the annual Dinner of the Royal Institution of Naval Architects in London on 27 April 2005.



The Lloyd's Register and Royal Institution of Naval Architects Ship Safety Award serves to promote a greater awareness of the need for safer ships. The award is presented to individuals or organizations whose work has made a significant contribution to improving safety at sea and the protection of environment. The distinguished judges confirmed that TNF Magic has made a significant contribution in both areas. It is the only time the prestigious Ship Safety Award has been given to an interior accommodation system.